

## Museum Pass Policy

Passes may be reserved by patrons who are 18 and older with a valid C/W MARS library card.

### Reserving

Passes can be reserved by phone (508-210-5569) or in person at the Reference Desk.

A patron/ household may reserve one pass for one museum (with the exception of Garden in the Woods) per day.

Passes cannot be renewed. Please call to cancel reservations.

### Checkout/Returns

Passes may be picked up at the Reference Desk either the day of the museum visit or the day before, if they are available.

Patrons must present their library card, which must be in good standing, when picking up the pass.

Coupon passes do not need to be returned; non-coupon passes are due back at the Gale Free Library the day they are used, or before 9:30 AM the next day.

### Fines

The fine for returning passes late is \$10/day, with a \$50 maximum.

A fee of \$10 will be charged for failing to pick up or cancel a reservation.

## Gale Free Library Hours

Mon	9:30 - 5:30
Tues	9:30 - 8:00
Wed	9:30 - 8:00
Thurs	9:30 - 8:00
Fri	9:30 - 5:30
Sat	9:00 - 4:00
(Sat-Summer 9:00 - 1:00)	

23 Highland Street  
Holden, MA 01520

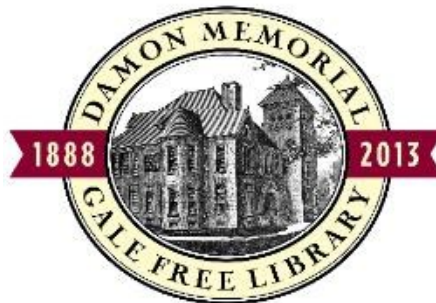
**(508) 210-5569**

[www.galefreelibrary.org](http://www.galefreelibrary.org)

**Friends of the  
Gale Free Library**

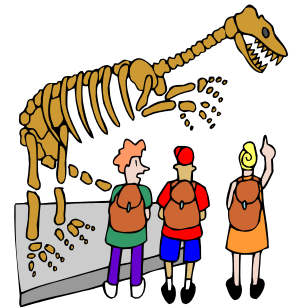
[www.fgfl.org](http://www.fgfl.org)

[email-friends@fgfl.org](mailto:email-friends@fgfl.org)



*Opening doors for 125 years.*

# Gale Free Library Museum Pass Program 2018



**Sponsored by the  
Friends of the Gale  
Free Library**

***\*New! Boston Children's  
Museum***

<http://www.bostonchildrensmuseum.org/>

Coupon pass admits up to 4 people at half price on Tues, Thurs, and Sat

---

***Discovery Museums***

<http://www.discoverymuseums.org/>

Pass admits up to 3 people at half price to both Museums

---

***Ecotarium***

<http://www.ecotarium.org/>

Coupon pass admits 2 adults and 2 children at half price

Children under 2 admitted free

---

***\*New! Garden in the Woods***

<http://www.newfs.org/visit/Garden-in-the-Woods>

Four passes available each day; each pass admits 1 adult at half price, and 1 child (3-17) at \$1

Open mid-April to mid-October

~Pass provided in honor of  
Roberta Bodwell~

***Mass State Park Parking  
Pass***

<http://www.mass.gov/eea/agencies/dcr/massparks/>

Pass provides free parking for 1 vehicle (excluding buses or vans) at over 50 Mass State Parks facilities that charge a daily parking fee

---

***Museum of Fine Arts, Boston***

<http://www.mfa.org/>

Coupon pass admits 2 people for \$10 each

Children 6 and under admitted free

---

***Mystic Aquarium***

<http://www.mysticaquarium.org/>

Pass admits up to 4 people at reduced admission (\$5 off)

Children 2 and under admitted free

---

***Old Sturbridge Village***

<http://www.osv.org/>

Pass admits up to 4 people at half price during the daytime

Children 2 and under admitted free

***\*New! Plimoth Plantation***

<http://www.plimoth.org/>

Reduced admission for up to 6 tickets, any combination of adult (\$16) and/or child (\$10)

---

***Tower Hill Botanic Garden***

<http://www.towerhillbg.org/>

Pass admits 2 people at half price

Children under 6 admitted free

---

***USS Constitution Museum***

<https://www.usconstitutionmuseum.org/>

Pass admits up to 9 people free

---

***Worcester Art Museum***

<http://www.worcesterart.org/>

Pass admits 2 adults and 2 children at no charge

Children 3 and under admitted free

---

***Worcester Historical Museum***

<http://www.worcesterhistory.org/>

Pass admits up to 2 adults and 4 children under 18 at no charge