



# The BOOKMARK

The monthly newsletter of the Gale Free Library

## April Library News

### Contents

Library News  
Page 1

Art at the Library,  
Adult Programs  
Page 2

Children's &  
Teens' Programs  
Page 3

Museum Passes,  
Seed Library Programs,  
Children's Room  
Renovation  
Page 4

Staff Picks,  
Judy Reviews  
Page 5

### Library Hours

Monday 9:30 am-5:30 pm  
Tuesday 9:30 am-8 pm  
Wednesday 9:30 am-8 pm  
Thursday 9:30 am-8 pm  
Friday 9:30 am-5:30 pm  
Saturday 9 am-4 pm

Contact Us:  
508-210-5560  
galefreelibrary@gmail.com

## GALE FREE SEED LIBRARY



### The GFL's New Seed Library Opened March 23!

We are excited to announce the opening of the Gale Free Seed Library!

#### What Is a Seed Library?

A repository of produce, flower, and herb seeds that you can check out—just like books! Except instead of returning them, you get to plant them at your home. Most of our seeds have been donated by nurseries and community organizations. None have been chemically treated, and many are native to MA. It is free and open to the community—no library card needed.

#### How Many Seeds Can I Check Out?

You can check out up to 3 seed packs per family, per month. We ask that you choose no more than 1 packet per group (tomatoes, flowers, lettuce, etc.). As we acquire more seeds, the number that can be borrowed will increase!

#### How Do I Check Them Out?

The Seed Library is located in the first floor Reference area. Please record the seeds that you check out on the clipboard. This will help us track our inventory and which seeds are most popular!

*For more information on the Seed Library, contact the Reference Desk at 508-210-5569 or email us at galefreelibrary@gmail.com.*

**The Library will be closed  
Patriots' Day, Monday, April 20**

## April Art at the Library



We have two art shows in April highlighting the vast talent in our community!

In the Program Room, we are happy to welcome back the Holden Senior Center and their artwork. The theme for their show is "America the Beautiful" in honor of the nation's 250<sup>th</sup> birthday.

And in the Lobby, we will be having our Spring Community Art Show, with the theme of "Abundance" and how our local artists interpret and celebrate it.

Our **art reception on Saturday, April 18, 11am-12pm** will be double the fun, as we will be highlighting both art exhibits and all of the artists. Refreshments will be provided.

---

For more information or to register for a program, please contact the Reference Desk at 508-210-5569 or email us at [galefreelibrary@gmail.com](mailto:galefreelibrary@gmail.com).

# Adult Programs

**See Page 4 for Seed Library Programs**

### *Ukulele Group*

Wednesdays, 4/1 & 4/15, 6-7pm  
Ages 16+

Join us for our Ukulele Group! Whether you are new to the ukulele or more advanced, we welcome you to join this group, where you can play together, learn from each other, and have fun! If you are new to the group, please contact the Reference Desk to let us know you'll be attending.

### *Adult Take-Home Craft*

**Begins Tuesday 4/7**

Our take-home craft is back! This month's craft is a Beaded Garden Plant Stake. Stop by the Reference Desk for your craft. As supplies are limited, crafts are one per person.

### *The Craft of Writing Workshop*

*"What Makes*

*Good Poems Work?"*

Thursday, 4/9, 10:30am-12pm

Online via Zoom

**Registration required**

For National Poetry month, we'll look at pairs of poems side by side and discuss what writing strategies make for an effective poem.

### *Cooking Club*

*"Grains and Seeds"*

Tuesday, 4/14, 6:30pm

**Registration required**

Grains and seeds are natural whole foods that are great to add to our diet. We bet that you have, in your home cuisine, at least one dish containing grains, seeds, or both. Maybe it's a quinoa salad, rice dish, whole wheat bread, cookies sprinkled with sesame or poppy seeds, or something else that's delicious!

### *Classics Book Group*

Tuesday, 4/21, 1pm

**Registration required**

The Classics Book Group is back, *at a new day and time!* This month the group will be discussing *The Color Purple* by Alice Walker. Copies of the book can be picked up at the Reference Desk.

### *Art Club*

Wednesday, 4/29, 6-7:30pm

Ages 16+

**Registration required**

Join us for our monthly Art Club! Bring your own supplies or use ours. We have watercolor paints and paper, brushes, pastels, colored pencils, graphite, pens, collage materials, and more! There will be no specific project. Each month, we'll have a quotation or a book or an image available to inspire a(n optional) response. This program is intended for patrons of all abilities.

### *Weekly Knitting &*

*Crocheting Group*

Mondays, 1-2:30pm

Please join us in the Program Room each Monday afternoon. All are welcome, from beginners to experienced! Come to see what others are knitting, or just sit and knit!





*Listen, Learn, and Be Inspired:  
"Harold and the Purple Crayon"*

Tuesday, 4/14, 4:20 PM

Ages 5+

**Registration opens 4/7**

Join Mary Shepherd and let your imagination lead the way! Draw on muslin fabric with special markers and fabric crayons. When you're finished, your artwork will be mounted so it's ready to hang to show off your masterpiece!

Pokémon Club

Wednesday 4/15, 4:20 PM

Ages 6+

**Registration opens 4/8**

Hang out with other Pokémon trainers and make some Pokémon-inspired crafts!

*Read, Build, Play with  
Community Connections*

Friday, 4/17, 10 AM

Ages 2-5

Join us to read, build, and play! Children expand their problem-solving skills and develop social skills as they build.



*Earth Day Paper Quilling*

Tuesday, 4/21, 2:30 PM

Ages 7+

**Registration opens 4/14**

Learn the art of paper quilling to create beautiful, nature-inspired artwork!

*Graphic Novel Book Club*

Thursday, 4/30, 4:20 PM

Grades 4+

**Registration opens 4/2**

Come read and discuss *Millie of the Manor* by Karina Evans and Andrea Bell! We will also discuss art and how graphic novels are made. Once you register, visit the Children's Room to borrow your copy of the graphic novel.

# Children's & Teens' Programs

*LEGO Club*

Wednesday, 4/1 and 4/8, 4:20 PM

Ages 6+

**Registration opens**

**3/25 and 4/1**

Bricks on bricks on blocks! Help build a LEGO Minecraft display!

*LEGO Jr.*

Thursday, 4/2, 4:20 PM

Ages 4-5

**Registration opens 3/26**

Bricks on bricks on blocks! Help build a LEGO Minecraft display!

*Free-Play Friday*

Friday, 4/10, 3:30-5 PM

All ages

Hang out in the Program Room for some board games and Nintendo Switch fun! Children under the age of 6 must be accompanied by an adult. Parents are welcome to join in the fun!



Tuesday, 4/21 through Saturday, 4/25

Enjoy building with LEGO and DUPLO bricks in the Children's Room for all of April break week.



*Dungeons and Dragons One-Shot*

Tuesday, 4/28, 3:30-5:30 PM

Grades 6+

**Registration opens 4/21**

Join the party for a second-level adventure! This session is ideal for new and experienced players alike. You can come with your own first-level character or choose from a premade sheet.



*Lapsit Story Time*

Ages 2 and under

Thursdays at 10 AM

Join Miss Rachel for songs, short picture-book stories, and more. This story time will focus on routine, repetition, and early literacy skills like ABCs and 123s.

*Preschool Story Time*

Ages 3-6

Thursdays at 11 AM

Join Mr. Kevin for lots of laughs and fun stories! This story time will focus on picture-book stories and include some games or activities, along with Mr. Kevin's great sense of humor!



Want info about all the goings-on in the Children's Room sent right to your inbox? Sign up for our email list at [bit.ly/gflkidsemail](http://bit.ly/gflkidsemail).

You can also keep up with us on the

Gale Free Kids Facebook page at [galefreelibrary.org](http://galefreelibrary.org).

## Museum Passes

---



Isabella Stewart Gardner  
Museum  
Boston, MA

The “Hanging Nasturtiums” returns to the ISG in April, heralding the start of spring. Visit the Museum’s website for further information about bloom time.  
[gardnermuseum.org](http://gardnermuseum.org)



Spring BloomFest  
Stevens-Coolidge  
House and Gardens  
A Property of The Trustees  
of Reservations  
North Andover, MA

Beginning Thursday, April 30

Join us for the start of spring at Stevens-Coolidge House & Gardens with a celebration of bulbs at our Spring BloomFest weekend. Stroll through our beautiful gardens with their budding tulips, blooming trees, daffodils, and other spring bulbs while enjoying the crisp spring air and soundscape serenades. See ticket information at [thetrustees.org](http://thetrustees.org).



Native Plant Trust/  
Garden in the Woods  
reopens Sunday, April 19!

For more information or to reserve passes to these or other participants in our Museum Pass Program, please call the Reference Desk at 508-210-5569.

## Seed Library Programs

---

“Herbal Steam Baths, Compresses, and Poultices”

with Christine Leo

Thursday, April 16 , 6-7:30pm

**Registration required**

In this hands-on workshop, we will explore some simple skills and tips to enhance how medicinal herbs work. These “old-fashioned” methods have been used by home healers for generations to soothe, uplift, break up congestion, and quicken healing. The common herbs lemon balm, sage, comfrey, broadleaf plantain, and mint will all be explored. Attendees will try an herbal facial steam (so nice!) and compress, make a simple poultice, and go home with a ready-to-go healing bath sachet.

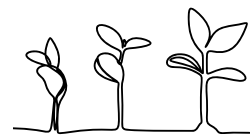


“Native Plants”

with Nikki Howell

Tuesday, April 28, 6pm

**Registration required**



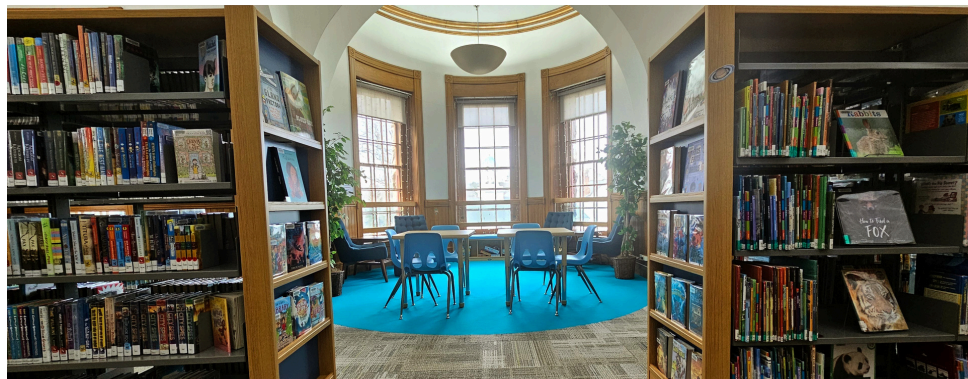
Nikki Howell of Lady Fern Farm will talk with us about native plants, what they are, and why they are important. Lady Fern Farm is a woman-owned, native-plant nursery cultivating a commitment to Northeast native plants and providing enriching educational workshops. Recognizing the critical environmental crossroads we are living in, Lady Fern Farm champions the ecological resilience of native plants, emphasizing their co-evolution with local wildlife and their pivotal role in preserving biodiversity.

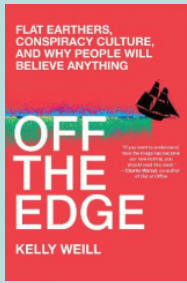
*For more information or to register for either of these programs, please call the Reference Desk at 508-210-5569 or email us at [galefreelibrary@gmail.com](mailto:galefreelibrary@gmail.com).*

## The Children’s Room Renovation Is Complete!

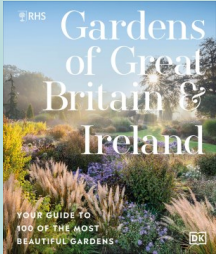
---

After months of planning, preparation, and construction -- along with deliveries, more deliveries, more construction, and finally, reshelving – the Children’s Room renovation is complete! The final touches were installed at the end of March. If you haven’t already, be sure to stop in to see the beautiful space for our youngest readers!





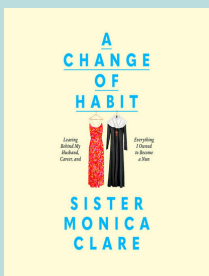
*Off The Edge*  
By Kelly Weill



*RHS Gardens of Great Britain and Ireland: Your Guide to 100 of the Most Beautiful Gardens*  
By Royal Horticultural Society



*The Boys*  
DVD-MA  
2022

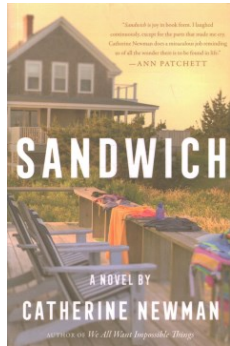


*A Change of Habit: Leaving Behind My Husband, Career, and Everything I Owned to Become a Nun*  
by Sister Monica Clare

## *Sandwich and Wreck* by Catherine Newman



Catherine Newman was born in 1968 and graduated from Amherst College in 1990. She attained her Ph.D. in Literature from the University of California, and she is the Academic Department Coordinator of Creative Writing at Amherst College. She has written several books in many genres and on many subjects for all ages. In addition to being a writer of books, magazine articles, and online blogs, she also gives workshops, public-radio commentary, and TV appearances. She currently resides in Amherst, MA.



Catherine Newman's novel *Sandwich* is a funny story about a family's summer vacation week at a run-down beach cottage on Cape Cod, which they have been renting at the same time for 20 years. Usually their vacations are full of sunny days, good meals, and memorable experiences. However, this year Rocky and her husband, Nick, are sandwiched between her aging parents (who come for their usual two-day visit) and their young adult children, Willa and Jamie. At the same time Rocky is also dealing with the hormonal bouts of rage and melancholy attributed to menopause. Rocky shares her observations on marriage, menopause, and children, which a lot of us can relate to.

Rocky also discusses coming to grips with a secret she has kept hidden for years. She covers the difficult subject matter with some well-placed, humorous moments.



*Wreck* embraces the same beloved characters we met in *Sandwich*. Rocky has lost her much-loved mother and has many nostalgic moments. She also is busy attending to her very calm husband, Nick, her post-collegiate daughter, Willa, her son, Jamie, who has joined the corporate world in New York City, and her widowed father. At the same time Rocky is dealing with a painful illness and the anxiety and uncertainty that occur when doctors are unable to reach a definitive diagnosis.

There is also the underlying plot of a local accident that indirectly affects her family and leads to a lot of unanswered questions. In the end, the book's philosophy is embrace the mess, because someday it won't be there and you will miss it. Perhaps this is a lesson we should all learn from this book.

Both books are journeys where the narrator looks at some difficult issues and gains perspective. Life is short. We need to appreciate the good, and deal with happiness and sorrow in equal measure.

### Also with Catherine Newman

*Caregiving Author Talk* with Catherine Newman  
on PBS Books

Broadcast date January 14, 2026.

Available at PBS website:

<https://www.pbs.org/video/caregiving-author-talk-with-catherine-newman-lplv0r/>